

October 2012 Special Work Session

Nineteen hardy souls signed up for a six- day October Car Restoration Facility (CRF) special work session, expecting cold Antonito winds - and were greeted with sunny very pleasant days featuring almost no wind!

Registered were: Dan Pyzel, Mark Horner, Tim Bristow, Chuck Deuker, Mary Jane Smith, Bob McCain, Jack Warner, George Davies, Peggy Warner, Patty Hanscom, Craig McMullen, John Engs, Fuzzy Anstine, Marshall Smith, Russ Hanscom, Kevin Corwin and Ed Lowrance. Not pictured: Valley Lowrance (behind the camera), Naomi Sublett and Jim Sublett.



Project 800 CRF Maintenance:

Jack Warner and George Davis took the lead on many of the CRF Maintenance tasks. Monday saw a number of clean-up projects underway. O53 unused siding wood was moved to the wood storage reefer. Tables blocking the CRF east door entrance were unloaded and moved. The storage container was opened and all tools were deployed to the tool room or other appropriate locations. Double sided steel shelving in the container was broken down into single units and relocated to permanent wall positions in the Container and the northern-most storage reefer. All were secured to the wall for stability.



The container has been designated as a flammable storage locker. All paint stored in various locations of the CRF along with paint thinners and other oil based lubricating materials were relocated to the container. Some 738 parts have been stored in the container. The crew of Jack and George continued working loading ties for the Chama garden under the watchful eye of Naomi Sublett!

Left: Jim Sublett inspects and corrects deficiencies discovered on the combination brake and rolling machine; necessary parts have been ordered

Project 1003 Cook Car 053 Restoration: Team Leader Craig McMullen, Chuck Deuker and Tim Bristow replaced wood sheathing on both side roofs. During this work, it became clear the center clerestory roof carlins (rafters) were mostly rotten. The team began removing the tin roof covering on Wednesday - and found only one solid carlin after removal of the entire center roof. Fifteen feet of clerestory roof top sill was totally rotted. A new sill was crafted and inserted, requiring fine carpentry to hide the bolts. The roof walk handrail was hoisted to the CRF ceiling as the safest storage location. Replacement roof carlins will be made over the winter.



Chuck Deuker replaces sill



Tim Bristow removes roof tin



Tim Bristow, Craig McMullen and Chuck Deuker replace roof sheathing

Project 1080 Stock Car 5995 Restoration: Team Leader Dan Pyzel and members Kevin Corwin and Mike Horner worked on 5995 which Dan says is the only D&RG 34' stock car likely to be restored. Major work was concentrated on the B end of the car. They modified, adapted and installed a body bolster rescued from a 30' stock car. They prowled the Chama swamp harvesting couplers (3) now hidden in a reefer. Roof walk brackets were installed on the A and B ends.

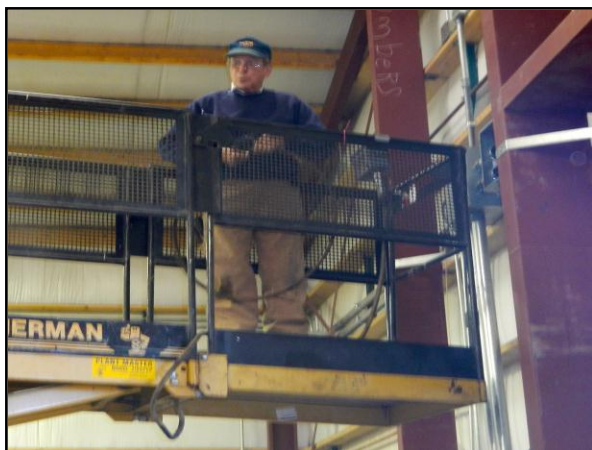


Mike Horner, Kevin Corwin and Team Leader Dan Pyzel

Project 1169 Landscape Display Train: Jack Warner, George Davies and Ed Lowrance chopped grass from between ties along the display equipment. Landscape fabric was unrolled and covered with cinders from a pile reserved for this use by the RR. Working with tractor driver John Engs numerous trips were made spreading cinders to an average depth of over 3" along the length of the display train and beyond meeting up with other cinder ground covering. Approximate distance of 200 feet by 15' wide was treated. This project was funded by a grant from CDOT.



Project 1189 Install Electric Circuit to Milling Equipment: The lathe and milling machines were leveled with anti-vibration pads. Russ Hanscom, Marshall Smith, Bob McCain and John Engs installed an auxiliary 50-amp circuit at the metal working shop-to-be. Connections were run to the lathe and milling machine - using high visibility safety switches. The circuit box will receive a lock to prevent unauthorized used. Both machines were operated and found to be in excellent condition after their move from Flagstaff AZ.



The electrical crew has continued work elsewhere - drawing wire to the reefers from the main panel through the compressor room which will continue to the CRF in the future. This work will provide a welding outlet in the area between the two reefers. Jim Sublett has worked as helper on the electrical and CRF Maintenance projects.

Left: Bob McCain installs circuit



John Eng and Marshall Smith working on lathe

1197 Passenger Coach Trucks: Russ Hanscom took a complete inventory of castings on hand, discovering more parts are on hand than previously thought.



Russ Hanscom will create a spreadsheet of parts needed for three sets of passenger car trucks

Project 231 Food Service: Team Leader Mary Jane Smith, workers Peggy Warner, Valley Lowrance and Patty Hanscom served their usual tasty lunches with a special fall twist. Monday and Wednesday featured warm soup in addition to sandwiches and other good stuff. Tuesday was burger day with fresh STRAWBERRY SHORTCAKE! More warming soup on Wednesday with a fried chicken dinner in the CRF “Dining Room.” Thursday main menu item - pulled pork with a Blue Bunny dessert (Ed’s almost very favorite!). Patty Hanscom and Valley Lowrance brought home-made cookies and breads for the snack tray. A good selection of fruit, vegetables and dips provided variety. Halloween popcorn laced with candy corn was provided



Project 1201 Flag Pole Construction:

The Friends received a request from C&TSRR Chief Maintenance Officer Marvin Casias and AHR’s Al Harper to replace the destroyed Antonito flagpole. Russ Hanscom built two new 25’ heavy duty flagpoles from schedule 40 iron pipe. Cleats, lanyards and solar flag lights with 3” gold ball toppers were provided. The poles will sit in bases on pivots to allow easy servicing. Marvin Casias hired a contractor to drill holes for the concrete bases but didn’t show.

Ronnie from the railroad shop crew consulted with Team Leader Russ Hanscom; they looked over the finished product to understand how to “plant” the poles. Jim Sublett prepared the poles and bases for painting, primed them and applied a finish coat of silver paint.

Project 701 Antonito Landscaping:

Naomi Sublett gave the new pine trees a pre -winter heavy watering - and continued landscaping the corner of the CRF. She reports the damaged trunk which was bandaged early in 2012 is healing very nicely.

All irrigation waterlines were winterized. Landscaping around the street marker has begun. Tumbleweed and trash removal all alongside the building and planted areas was finished - until next time!



Project 1154 Snowshed Header Repair: During installation of a new header earlier during summer 2012 work sessions, a seriously compromised header was discovered which might fail under a heavy snow load. Co-Team Leaders John Engs and Russ Hanscom traveled to Cumbres to effect emergency repairs to a snowshed header. George Davies and Jack Warner assisted installation of a “sister” pole until proper repairs could be completed.

During this same trip the group continued on to Chama to locate and inventory more truck parts for project 1197, Passenger Coach Trucks.

--John Engs and Ed Lowrance served as Co-Site Leaders for the session.